

New!

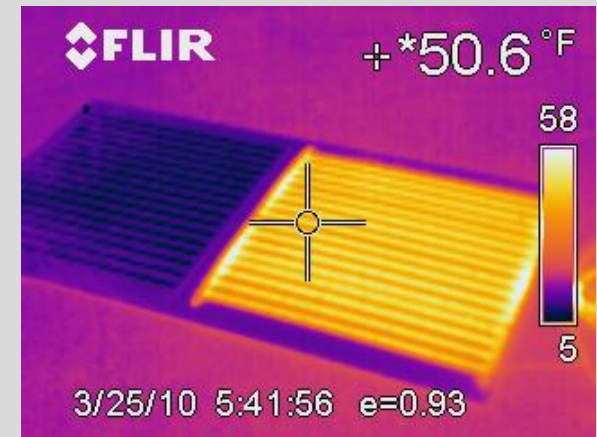
Frost Fighter[®] Clear View II Defrosters

Window defrosters and replacements made easy



www.frostfighter.com

12 VOLT



World leader in aftermarket defrosters
and control solutions in 12 and 24 volt.

12V Master Defroster Catalog

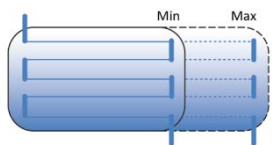
Frost Fighter[®] Clear View II Defrosters made easy



www.frostfighter.com

Clear View II Defrosters

Frost Fighter[®] Clear View II Defrosters match the heating performance of factory installed rear window defrosters, clearing snow and ice in minutes. Cost effective and easy to install, new Clear View II defrosters provide full window coverage with an attractive factory appearance.



Compatible with vehicles from cars and trucks to snow moving equipment, tractors and heavy equipment, Clear View makes adding a defroster easy. Use anyplace window defrosting is needed.

How they work

Clear View defrosters have an electrical resistance which when powered provides the heat needed to clear windows of snow and ice in minutes.

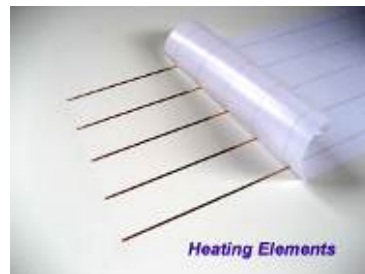
Heating is accomplished through contact between the defroster elements and the window. The defroster is connected electrically through the buss bar tabs and activated with the automatic ThermaSync defroster control.

Easy Application

The heating elements come on pre-spaced rolls for easy and accurate application. Heating elements bond directly to the window and are trimmed for a custom defroster fit.

Once the heating elements are bonded to the window the side buss bars are placed and a black plastic cover applied for a finished factory appearance.

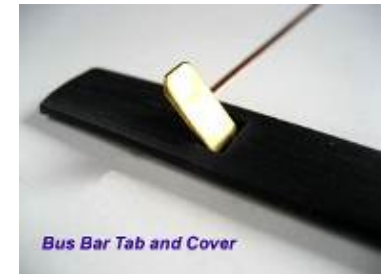
Fully illustrated instructions come with every kit.



Connections

The side buss bars include integral tabs positioned for easy connection to ThermaSync[®] defroster controls or to existing defroster wiring.

Clear View II defrosters are available individually or with a full wiring harness, control and installation kit.



Finished Appearance

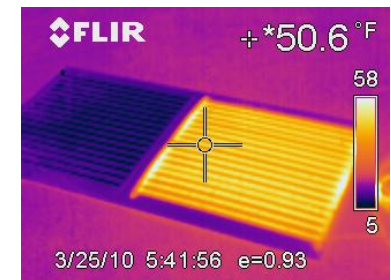
Heating elements match the brownish color of factory defrosters and adhere directly to the glass for improved visibility and safe winter driving. No backing is left on the window to crack or yellow.

NEW Performance and Sizes

Clear View II Defrosters feature enhanced bonding, new controls and proven heating capability to defrost windows even in the most challenging winter conditions.

Now available in hundreds of sizes in 12 and 24 volt Clear View II defrosters fit almost any window.

Clear View II makes defrosters EASY!



Infrared image showing a Clear View II Defroster. Right side on.

Frost Fighter ThermaSync[®] Defroster controls with smarts

www.frostfighter.com



ThermaSync Defroster Controls

New Frost Fighter ThermaSync[®] defroster controls are the perfect companion for Clear View II and other defrosters.

Available in four models from the simple automatic ten minute timing to more sophisticated adjustable automatic shut off timing, power modulation and network control allowing a single switch to control multiple defrosters.



ThermaSync Defroster Control and Switch.

Power Modulation

ThermaSync controls can modulate the apparent power to the defroster from 3% up to 100%. This feature enables hundreds of new Clear View II defroster sizes to fit almost any window in 12 and 24 volt.

ThermaSync Automatic Timing

Press the defroster symbol on the remote switch to turn the defroster on. The defroster stays on until the switch is pressed again or the ThermaSync control times out.

The 2812/2824 controls can be set to time out from 10 to 160 minutes or can be left on indefinitely depending on the internal jumper settings. This feature is good for applications where longer timing cycles are desired like snow plow equipment.

With the addition of a Switch Boss, 2812/2824 ThermaSync controls can activate several defrosters at once through a single switch making the system ideal for multiple defroster installations like industrial equipment cabs.

One Switch, Multiple Defrosters

A single switch can activate many defrosters using the ThermaSync Switch Boss. This network control is good for applications that require several defrosters to be activated from a single switch.



Switch Boss defroster network control. One switch controls many defrosters.

Mounting

The ThermaSync control can be secured out of sight under the dash while the switch can be mounted remotely in dash. A separate under dash mount is included with full kits.

Installation Options

Clear View II Defrosters and ThermaSync Controls are available individually or with a full installation package including a wire harness, fuse, fuse holder, switch mounting plate, power tap, wire ties, surface cleaner/adhesion promoter and full instructions.



Complete defroster. Representative photo only.

Clear View II defrosters and ThermaSync controls are available for 12 and 24 volt systems. See our [website](http://www.frostfighter.com) for all Clear View II defrosters and ThermaSync Controls.

[Click here to view our online catalog.](#)

Frost Fighter[®] Clear View II Ordering and Tips



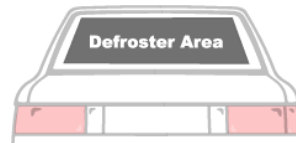
www.frostfighter.com

How to order

To order Clear View II Defrosters follow the steps below.

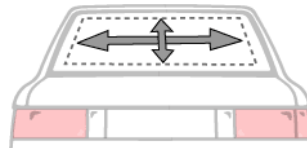
1 Determine Defrost Area

Take a good look at the window to establish the defrost area. The elements do not need to completely fill the area to be effective.



2 Measure the Defrost Area

Allow at least 1.5 in (3.8 cm) clearance from the windows edge. On vehicles with tightly curving windows the defroster should stop before the radius. Take back up lights into account.

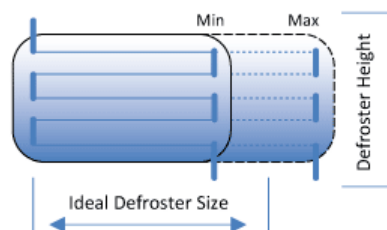


Important! The defroster height (top-to-bottom) is fixed by the number of grid lines and cannot be changed. The defroster width (side-to-side) can be trimmed within the minimum and maximum defroster sizes.

3 Select the Clear View Defroster

Start by selecting a defroster that fits the height (top-to-bottom) of the window. Then select the defroster width (side-to-side) between the maximum and minimum width for the defroster.

The height listed includes the tab ends which are 5/8 in (1.6 cm).



Important!

If replacing an existing defroster or when **NOT** using the ThermoSync defroster control – only defrosters with 100% power modulation **MUST** be used. Only ThermoSync has power modulation.

Secrets to Defroster Success

While Clear View II defrosters are easy to install there are a few things that are critical to success! All units come with full instructions.

1. Select a defroster that fits in the window. Respect the minimum and maximum allowed widths.
2. Do NOT add or remove heating elements from Clear View II Defrosters.
3. Follow the layout in the instructions regarding the number of heating elements per buss bar section.
4. Make sure surface is CLEAN. Clean with window cleaner and then use the GAP-1 wipe included with each kit.

Order stock Clear View Defrosters online. [Frost Fighter Catalog](#).



Planned Products LLC
4699 Nautilus Court S.
Suite 201
Boulder, CO 80301
USA

Tel: 303.682.0274
Fax: 303.682.0678
info1@frostfighter.com
www.frostfighter.com

Frost Fighter[®] Clear View II Technical



www.frostfighter.com

Peak Current

This is the current that is obtained by dividing the Voltage at the heater by the Resistance of the heater. It is important that the 25 ampere rating of the electronic switch not be exceeded. It is also important in calculating the voltage drop in the circuit feeding the heaters, and is independent of duty cycle.

RMS Current

This is the current that actually does the heating. It is obtained by multiplying the Peak Current times the square root of the duty cycle. To obtain adequate heat on the window, the RMS current needs to be at least 2.75 amperes in all conductors, and to prevent over heating the window, cannot be greater than 4.3 amperes in any conductor.

Average Current

This current represents the amount of drain on the battery. It is obtained by multiplying the Peak Current times the duty cycle. If the window is warmed for ten minutes without the engine running, the ampere-hour drain on the battery, the battery drain will never exceed a comfortable 4.2Ah.

ThermaSync Defroster Controls

The 2712/2724 ThermaSync defroster controls provide simple automatic timing while the 2812/2824 controls allow for selectable automatic shut off timing in 10, 20, 40, 80, 160 minutes or manual operation. See page 10 for more.

Fuse Ratings

Since fuses are sensitive to RMS current, recommended fuse ratings should be at least 20% higher than the RMS current.

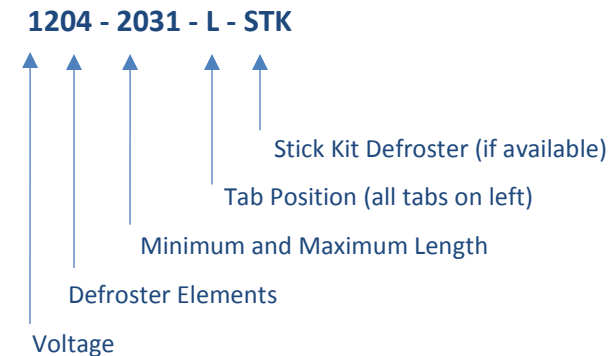
Standard automotive fuse ratings are 5.0A, 7.5A, 10A, 15A, 20A, 25A and 30A. So the recommended fuse rating is obtained by multiplying the maximum RMS current times 1.2 and selecting the next higher standard fuse.

Duty Cycle


Duty Cycle is defined as the time that the heater is ON divided by the time the heater is OFF plus the time the heater is ON, and is generally expressed in percent. If the heater is ON all the time, the duty cycle is said to be 100%.


Part Numbers


Clear View defrosters have a simple part numbering set up.




Clear View II Defrosters – 12 Volt

Full Defroster Part Number	Stick Kit ¹ Part Number	Height inch (cm)	Length, inch (cm)		Heating Elements	Grid Format	Power Modulation	Tabs ²	Voltage	Peak Current (Amp) ³		Fuse (Amp)	Drawing?	Stick Kit Price	Full Kit Price
			Min	Max						Short	Long				
Start here, select height															
1202-1418-L		4.12 (10.4) ⁴	14 (36)	18 (46)	2	2 Ser 1 Par	3%	L	12	25.0	19.4	5.0	Yes	-	\$55.95
1202-1725-L		4.12 (10.4) ⁴	17 (43)	25 (64)	2	2 Ser 1 Par	6%	L	12	20.4	13.8	7.5	Yes	-	\$56.20
1202-2435-L		4.12 (10.4) ⁴	24 (61)	35 (89)	2	2 Ser 1 Par	12%	L	12	14.4	9.7	7.5	Yes	-	\$56.45
1202-3450-L		4.12 (10.4) ⁴	34 (86)	50 (127)	2	2 Ser 1 Par	25%	L	12	10.2	6.9	7.5	Yes	-	\$56.70
1202-4871-L		4.12 (10.4) ⁴	48 (119)	71 (180)	2	2 Ser 1 Par	50%	L	12	7.2	4.9	7.5	Yes	-	\$56.95
1202-6884-L	1202-6884-L-STK	4.12 (10.4) ⁴	68 (173)	84 (213)	2	2 Ser 1 Par	100%	L	12	5.1	3.4	7.5	Yes	\$30.20	\$57.20
1202-5571		2.56 (6.5)	55 (140)	71 (180)	2	1 Ser 2 Par	12%	L / R	12	25.0	19.4	10.0	Yes	-	\$57.45
1202-6884		2.56 (6.5)	68 (173)	84 (213)	2	1 Ser 2 Par	25%	L / R	12	20.4	16.4	15.0	Yes	-	\$57.70
1203-0912		3.75 (9.5)	09 (23)	12 (30)	3	3 Ser 1 Par	3%	L / R	12	25.0	19.4	5.0	Yes	-	\$57.95
1203-1117		3.75 (9.5)	11 (28)	17 (38)	3	3 Ser 1 Par	6%	L / R	12	20.4	13.8	7.5	Yes	-	\$58.20
1203-1624		3.75 (9.5)	16 (41)	24 (61)	3	3 Ser 1 Par	12%	L / R	12	14.4	9.7	7.5	Yes	-	\$58.45
1203-2333		3.75 (9.5)	23 (58)	33 (84)	3	3 Ser 1 Par	25%	L / R	12	10.2	6.9	7.5	Yes	-	\$58.70
1203-3247		3.75 (9.5)	32 (81)	47 (119)	3	3 Ser 1 Par	50%	L / R	12	7.2	4.9	7.5	Yes	-	\$58.95
1203-4567	1203-4567-STK	3.75 (9.5)	45 (114)	67 (170)	3	3 Ser 1 Par	100%	L / R	12	5.1	3.4	7.5	Yes	\$32.20	\$59.20
1203-8384		3.75 (9.5)	83 (211)	84 (213)	3	1 Ser 3 Par	25%	L / R	12	25.0	24.6	15.0	Yes	-	\$59.45
1204-0709-L		5.00 (12.7)	07 (18)	09 (23)	4	4 Ser 1 Par	3%	L	12	25.0	19.4	5.0	Yes	-	\$59.70
1204-0813-L		5.00 (12.7)	08 (20)	13 (33)	4	4 Ser 1 Par	6%	L	12	20.4	13.8	7.5	Yes	-	\$59.95
1204-1218-L		5.00 (12.7)	12 (30)	18 (46)	4	4 Ser 1 Par	12%	L	12	14.4	9.7	7.5	Yes	-	\$60.20
1204-1725-L		5.00 (12.7)	17 (43)	25 (64)	4	4 Ser 1 Par	25%	L	12	10.2	6.9	7.5	Yes	-	\$60.45
1204-2435-L		5.00 (12.7)	24 (61)	35 (89)	4	4 Ser 1 Par	50%	L	12	7.2	4.9	7.5	Yes	-	\$60.70
1204-3450-L1	1204-3450-L1-STK	5.00 (12.7)	34 (86)	50 (127)	4	4 Ser 1 Par	100%	L	12	5.1	3.4	7.5	Yes	\$33.95	\$60.95
1204-2835-L		5.00 (12.7)	28 (71)	35 (89)	4	2 Ser 2 Par	12%	L	12	25.0	19.4	10.0	Yes	-	\$61.20
1204-3450-L		5.00 (12.7)	34 (86)	50 (127)	4	2 Ser 2 Par	25%	L	12	20.4	13.8	15.0	Yes	-	\$61.45
1204-4871-L		5.00 (12.7)	48 (119)	71 (180)	4	2 Ser 2 Par	50%	L	12	14.4	9.7	15.0	Yes	-	\$61.70
1204-6884-L	1204-6884-L-STK	5.00 (12.7)	68 (173)	84 (213)	4	2 Ser 2 Par	100%	L	12	10.2	8.2	15.0	Yes	\$34.95	\$61.95
1205-0607		6.25 (15.8)	06 (15)	07 (18)	5	5 Ser 1 Par	3%	L / R	12	23.3	19.4	5.0	Yes	-	\$62.20

Full Defroster Part Number	Stick Kit ¹ Part Number	Height inch (cm)	Length, inch (cm)		Heating Elements	Grid Format	Power Modulation	Tabs ²	Voltage	Peak Current (Amp) ³		Fuse (Amp)	Drawing?	Stick Kit Price	Full Kit Price
			Min	Max						Short	Long				
Start here, select height															
1205-0710		6.25 (15.8)	07 (18)	10 (25)	5	5 Ser 1 Par	6%	L / R	12	20.4	13.8	7.5	Yes	-	\$62.45
1205-1014		6.25 (15.8)	10 (25)	14 (36)	5	5 Ser 1 Par	12%	L / R	12	14.4	9.7	7.5	Yes	-	\$62.70
1205-1420		6.25 (15.8)	14 (36)	20 (51)	5	5 Ser 1 Par	25%	L / R	12	10.2	6.9	7.5	Yes	-	\$62.95
1205-1928		6.25 (15.8)	19 (48)	28 (71)	5	5 Ser 1 Par	50%	L / R	12	7.2	4.9	7.5	Yes	-	\$63.20
1205-2740	1205-2740-STK	6.25 (15.8)	27 (69)	40 (101)	5	5 Ser 1 Par	100%	L / R	12	5.1	3.4	7.5	Yes	\$36.45	\$63.45
1206-0708-L		7.50 (19.0)	07 (18)	08 (20)	6	6 Ser 1 Par	6%	L	12	16.6	13.8	5.0	Yes	-	\$63.70
1206-0812-L		7.50 (19.0)	08 (20)	12 (30)	6	6 Ser 1 Par	12%	L	12	14.4	9.7	7.5	Yes	-	\$63.95
1206-1117-L		7.50 (19.0)	11 (23)	17 (43)	6	6 Ser 1 Par	25%	L	12	10.2	6.9	7.5	Yes	-	\$64.20
1206-1624-L		7.50 (19.0)	16 (41)	24 (61)	6	6 Ser 1 Par	50%	L	12	7.2	4.9	7.5	Yes	-	\$64.45
1206-2333-L	1205-2333-L-STK	7.50 (19.0)	23 (58)	33 (84)	6	6 Ser 1 Par	100%	L	12	5.1	3.4	7.5	Yes	\$37.70	\$64.70
1206-1824		7.50 (19.0)	18 (46)	24 (61)	6	3 Ser 2 Par	12%	L / R	12	25.0	19.4	10.0	Yes	-	\$64.95
1206-2333		7.50 (19.0)	23 (58)	33 (84)	6	3 Ser 2 Par	25%	L / R	12	13.8	10.4	15.0	Yes	-	\$65.20
1206-3247		7.50 (19.0)	32 (81)	47 (119)	6	3 Ser 2 Par	50%	L / R	12	14.4	9.7	15.0	Yes	-	\$65.45
1206-4567	1206-4567-STK	7.50 (19.0)	45 (114)	67 (170)	6	3 Ser 2 Par	100%	L / R	12	10.2	6.9	15.0	Yes	\$38.70	\$65.70
1206-4150-L		7.50 (19.0)	41 (104)	50 (127)	6	2 Ser 3 Par	25%	L	12	25.0	20.6	15.0	Yes	-	\$65.95
1206-4871-L		7.50 (19.0)	48 (122)	71 (180)	6	2 Ser 3 Par	50%	L	12	21.6	14.6	20.0	Yes	-	\$66.20
1206-6884-L	1206-6884-L-STK	7.50 (19.0)	68 (173)	84 (213)	6	2 Ser 3 Par	100%	L	12	15.3	12.3	20.0	Yes	\$39.45	\$66.45
1207-0810		8.75 (22.2)	08 (20)	10 (25)	7	7 Ser 1 Par	12%	L / R	12	12.3	9.7	5.0	Yes	-	\$66.70
1207-1014		8.75 (22.2)	10 (25)	14 (36)	7	7 Ser 1 Par	25%	L / R	12	10.2	6.9	7.5	Yes	-	\$66.95
1207-1420		8.75 (22.2)	14 (36)	20 (51)	7	7 Ser 1 Par	50%	L / R	12	7.2	4.9	7.5	Yes	-	\$67.20
1207-1929	1207-1929-STK	8.75 (22.2)	19 (48)	29 (74)	7	7 Ser 1 Par	100%	L / R	12	5.1	3.4	7.5	Yes	\$40.45	\$67.45
1208-0913-L		10.00 (25.4)	09 (23)	13 (33)	8	8 Ser 1 Par	25%	L	12	9.5	6.9	5.0	Yes	-	\$67.70
1208-1218-L		10.00 (25.4)	12 (30)	18 (46)	8	8 Ser 1 Par	50%	L	12	7.2	4.9	7.5	Yes	-	\$67.95
1208-1725-L1	1208-1725-L1-STK	10.00 (25.4)	17 (43)	25 (64)	8	8 Ser 1 Par	100%	L	12	5.1	3.4	7.5	Yes	\$41.20	\$68.20
1208-1418-L		10.00 (25.4)	14 (36)	18 (46)	8	4 Ser 2 Par	12%	L	12	25.0	19.4	10.0	Yes	-	\$68.45
1208-1725-L		10.00 (25.4)	17 (43)	25 (64)	8	4 Ser 2 Par	25%	L	12	20.4	13.8	15.0	Yes	-	\$68.70
1208-2435-L		10.00 (25.4)	24 (61)	35 (89)	8	4 Ser 2 Par	50%	L	12	14.4	9.7	15.0	Yes	-	\$68.95
1208-3450-L	1208-3450-L-STK	10.00 (25.4)	34 (86)	50 (127)	8	4 Ser 2 Par	100%	L	12	10.2	6.9	15.0	Yes	\$42.20	\$69.20

Full Defroster Part Number	Stick Kit ¹ Part Number	Height inch (cm)	Length, inch (cm)		Heating Elements	Grid Format	Power Modulation	Tabs ²	Voltage	Peak Current (Amp) ³		Fuse (Amp)	Drawing?	Stick Kit Price	Full Kit Price
			Min	Max						Short	Long				
Start here, select height															
1208-5571-L		10.00 (25.4)	55 (140)	71 (180)	8	2 Ser 4 Par	50%	L	12	25.0	19.4	20.0	Yes	-	\$69.45
1208-6884-L	1208-6884-L	10.00 (25.4)	68 (173)	84 (213)	8	2 Ser 4 Par	100%	L	12	20.4	16.4	25.0	Yes	\$42.70	\$69.70
1209-1011		11.25 (28.5)	10 (25)	11 (28)	9	9 Ser 1 Par	25%	L / R	12	7.6	6.9	5.0	Yes	-	\$69.95
1209-1116		11.25 (28.5)	11 (28)	16 (41)	9	9 Ser 1 Par	50%	L / R	12	7.2	4.9	7.5	Yes	-	\$70.20
1209-1522	1209-1522-STK	11.25 (28.5)	15 (38)	22 (56)	9	9 Ser 1 Par	100%	L / R	12	5.1	3.4	7.5	Yes	\$43.45	\$70.45
1209-2833		11.25 (28.5)	28 (71)	33 (84)	9	3 Ser 3 Par	25%	L / R	12	25.0	20.6	15.0	Yes	-	\$70.70
1209-3247		11.25 (28.5)	32 (81)	47 (119)	9	3 Ser 3 Par	50%	L / R	12	21.6	14.6	20.0	Yes	-	\$70.95
1209-4567	1209-4567-STK	11.25 (28.5)	45 (114)	67 (170)	9	3 Ser 3 Par	100%	L / R	12	15.3	10.3	20.0	Yes	\$44.20	\$71.20
1210-1114-L		12.50 (31.7)	11 (28)	14 (36)	10	10 Ser 1 Par	50%	L	12	6.2	4.9	5.0	Yes	-	\$71.45
1210-1420-L	1210-1420-L-STK	12.50 (31.7)	14 (36)	20 (51)	10	10 Ser 1 Par	100%	L	12	5.1	3.4	7.5	Yes	\$44.70	\$71.70
1210-1114		12.50 (31.7)	11 (28)	14 (36)	10	5 Ser 2 Par	12%	L / R	12	24.8	19.4	10.0	Yes	-	\$71.95
1210-1420		12.50 (31.7)	14 (36)	20 (51)	10	5 Ser 2 Par	25%	L / R	12	20.4	13.8	15.0	Yes	-	\$72.20
1210-1928		12.50 (31.7)	19 (48)	28 (71)	10	5 Ser 2 Par	50%	L / R	12	14.4	9.7	15.0	Yes	-	\$72.45
1210-2740	1210-2740-STK	12.50 (31.7)	27 (69)	40 (102)	10	5 Ser 2 Par	100%	L / R	12	10.2	6.9	15.0	Yes	\$45.70	\$72.70
1210-6984-L	1210-6984-L-STK	12.50 (31.7)	69 (175)	84 (213)	10	2 Ser 5 Par	100%	L	12	25.0	20.5	25.0	Yes	\$45.95	\$72.95
1211-1218	1211-1218-STK	13.75 (34.9)	12 (30)	18 (46)	11	11 Ser 1 Par	100%	L / R	12	5.1	3.4	7.5	Yes	\$46.20	\$73.20
1212-0812-L		15.00 (38.1)	08 (20)	12 (30)	12	12 Ser 1 Par	50%	L	12	7.2	4.9	7.5	Yes	-	\$73.45
1212-1117-L1	1212-1117-L1-STK	15.00 (38.1)	11 (28)	17 (43)	12	12 Ser 1 Par	100%	L	12	5.1	3.4	7.5	Yes	\$46.70	\$73.70
1212-0912-L		15.00 (38.1)	09 (23)	12 (30)	12	6 Ser 2 Par	12%	L	12	25.0	19.4	10.0	Yes	-	\$73.95
1212-1117-L		15.00 (38.1)	11 (28)	17 (43)	12	6 Ser 2 Par	25%	L	12	20.4	13.8	15.0	Yes	-	\$74.20
1212-1624-L		15.00 (38.1)	16 (41)	24 (61)	12	6 Ser 2 Par	50%	L	12	14.4	9.7	15.0	Yes	-	\$74.45
1212-2333-L	1212-2333-L-STK	15.00 (38.1)	23 (58)	33 (84)	12	6 Ser 2 Par	100%	L	12	10.2	6.9	15.0	Yes	\$47.70	\$74.70
1212-2435-L		15.00 (38.1)	24 (61)	35 (89)	12	4 Ser 3 Par	50%	L	12	21.6	14.6	20.0	Yes	-	\$74.95
1212-3450-L	1212-3450-L-STK	15.00 (38.1))	34 (86)	50 (127)	12	4 Ser 3 Par	100%	L	12	15.3	10.3	20.0	Yes	\$48.20	\$75.20
1212-3747		15.00 (38.1)	37 (94)	47 (119)	12	3 Ser 4 Par	50%	L / R	12	25.0	19.4	20.0	Yes	-	\$75.45
1212-4567	1212-4567-STK	15.00 (38.1)	45 (114)	67 (170)	12	3 Ser 4 Par	100%	L / R	12	20.4	13.8	25.0	Yes	\$48.70	\$75.70
1212-8384-L	1212-8384-L-STK	15.00 (38.1)	83 (211)	84 (213)	12	2 Ser 6 Par	100%	L	12	25.0	24.6	25.0	Yes	\$48.95	\$75.95
1213-0711		16.25 (41.3)	07 (18)	11 (28)	13	13 Ser 1 Par	50%	L / R	12	7.2	4.9	7.5	Yes	-	\$76.20





Full Defroster Part Number	Stick Kit ¹ Part Number	Height inch (cm)	Length, inch (cm)		Heating Elements	Grid Format	Power Modulation	Tabs ²	Voltage	Peak Current (Amp) ³		Fuse (Amp)	Drawing?	Stick Kit Price	Full Kit Price
			Min	Max						Short	Long				
Start here, select height															
1213-1015	1213-1015-STK	16.25 (41.3)	10 (25)	15 (38)	13	13 Ser 1 Par	100%	L / R	12	5.1	3.4	7.5	Yes	\$49.45	\$76.45
1214-0710-L		17.50 (44.5)	07 (18)	10 (25)	14	14 Ser 1 Par	50%	L	12	7.2	4.9	7.5	Yes	-	\$76.70
1214-1014-L1	1214-1014-L1-STK	17.50 (44.5)	10 (25)	14 (36)	14	14 Ser 1 Par	100%	L	12	5.1	3.4	7.5	Yes	\$49.95	\$76.95
1214-0810		17.50 (44.5)	08 (20)	10 (25)	14	7 Ser 2 Par	12%	L / R	12	25.0	19.4	10.0	Yes	-	\$77.20
1214-1014		17.50 (44.5)	10 (25)	14 (36)	14	7 Ser 2 Par	25%	L / R	12	20.4	13.8	15.0	Yes	-	\$77.45
1214-1420		17.50 (44.4)	14 (35)	20 (51)	14	7 Ser 2 Par	50%	L / R	12	14.4	9.7	15.0	Yes	-	\$77.70
1214-1929	1214-1929-STK	17.50 (44.4)	19 (48)	29 (74)	14	7 Ser 2 Par	100%	L / R	12	10.2	6.9	15.0	Yes	\$50.95	\$77.95
1215-1720		18.75 (47.6)	17 (43)	20 (51)	15	5 Ser 3 Par	25%	L / R	12	25.0	20.6	15.0	Yes	-	\$78.20
1215-1928		18.75 (47.6)	19 (48)	28 (71)	15	5 Ser 3 Par	50%	L / R	12	21.6	14.6	20.0	Yes	-	\$78.45
1215-2740	1215-2740-STK	18.75 (47.6)	27 (69)	40 (102)	15	5 Ser 3 Par	100%	L / R	12	15.3	10.3	20.0	Yes	\$51.70	\$78.70
1215-4667	1215-4667-STK	18.75 (47.6)	46 (117)	67 (170)	15	3 Ser 5 Par	100%	L / R	12	25.0	17.2	25.0	Yes	\$51.95	\$78.95
1216-0813-L		20.00 (50.8)	08 (20)	13 (33)	16	8 Ser 2 Par	25%	L	12	20.4	13.8	15.0	Yes	-	\$79.20
1216-1218-L		20.00 (50.8)	12 (30)	18 (46)	16	8 Ser 2 Par	50%	L	12	14.4	9.7	15.0	Yes	-	\$79.45
1216-1725-L	1216-1725-L-STK	20.00 (50.8)	17 (43)	25 (64)	16	8 Ser 2 Par	100%	L	12	9.9	6.9	10.0	Yes	\$52.70	\$79.70
1216-2835-L		20.00 (50.8)	28 (71)	35 (89)	16	4 Ser 4 Par	50%	L	12	25.0	19.4	20.0	Yes	-	\$79.95
1216-3450-L	1216-3450-L-STK	20.00 (50.8)	34 (86)	50 (127)	16	4 Ser 4 Par	100%	L	12	20.4	13.8	25.0	Yes	\$53.20	\$80.20
1218-0811		22.50 (57.2)	08 (20)	11 (28)	18	9 Ser 2 Par	25%	L / R	12	20.4	13.8	15.0	Yes	-	\$80.45
1218-1116		22.50 (57.2)	11 (28)	16 (41)	18	9 Ser 2 Par	50%	L / R	12	14.4	9.7	15.0	Yes	-	\$80.70
1218-1522	1218-1522-STK	22.50 (57.2)	15 (38)	22 (56)	18	9 Ser 2 Par	100%	L / R	12	10.2	6.9	15.0	Yes	\$53.95	\$80.95
1218-1417-L		22.50 (57.2)	14 (36)	17 (43)	18	6 Ser 3 Par	25%	L	12	25.0	20.6	15.0	Yes	-	\$81.20
1218-1624-L		22.50 (57.2)	16 (41)	24 (61)	18	6 Ser 3 Par	50%	L	12	21.6	14.6	20.0	Yes	-	\$81.45
1218-1933-L	1218-1933-L-STK	22.50 (57.1)	19 (48)	33 (84)	18	6 Ser 3 Par	100%	L	12	17.7	10.3	20.0	Yes	\$54.70	\$81.70
1218-5567	1218-5567-STK	22.50 (57.1)	55 (140)	67 (170)	18	3 Ser 6 Par	100%	L / R	12	25.0	20.6	25.0	Yes	\$54.95	\$81.95
1220-1014-L		25.00 (63.5)	10 (25)	14 (36)	20	10 Ser 2 Par	50%	L	12	14.4	9.7	15.0	Yes	-	\$82.20
1220-1420-L	1220-1420-L-STK	25.00 (63.5)	14 (36)	20 (51)	20	10 Ser 2 Par	100%	L	12	10.2	6.9	15.0	Yes	\$55.45	\$82.45
1220-2228		25.00 (63.5)	22 (56)	28 (72)	20	5 Ser 4 Par	50%	L / R	12	25.0	19.4	20.0	Yes	-	\$82.70
1220-2740	1220-2740-STK	25.00 (63.5)	27 (69)	40 (102)	20	5 Ser 4 Par	100%	L / R	12	20.4	13.8	25.0	Yes	\$55.95	\$82.95
1220-3450-L	1220-3450-L-STK	25.00 (63.5)	34 (86)	50 (127)	20	4 Ser 5 Par	100%	L	12	25.0	17.2	25.0	Yes	\$56.20	\$83.20

Full Defroster Part Number	Stick Kit ¹ Part Number	Height inch (cm)	Length, inch (cm)		Heating Elements	Grid Format	Power Modulation	Tabs ²	Voltage	Peak Current (Amp) ³		Fuse (Amp)	Drawing?	Stick Kit Price	Full Kit Price
			Min	Max						Short	Long				
Start here, select height															
1221-1214		26.25 (66.7)	12 (30)	14 (36)	21	7 Ser 3 Par	25%	L/R	12	25.0	20.6	15.0	Yes	-	\$83.45
1221-1420		26.25 (66.7)	14 (36)	20 (51)	21	7 Ser 3 Par	50%	L / R	12	21.6	14.6	20.0	Yes	-	\$83.70
1221-1929	1221-1929-STK	26.25 (66.7)	19 (48)	29 (74)	21	7 Ser 3 Par	100%	L / R	12	15.3	10.3	20.0	Yes	\$56.95	\$83.95
1221-2329	1221-2329-STK	26.25 (66.7)	23 (58)	29 (74)	21	7 Ser 3 Par	100%	L / R	12	13.1	10.3	15.0	Yes	\$57.20	\$84.20
1221-6467	1221-6467-STK	26.25 (66.7)	64 (163)	67 (170)	21	3 Ser 7 Par	100%	L / R	12	25.0	24.1	25.0	Yes	\$57.45	\$84.45
1222-0913		27.50 (69.9)	09 (23)	13 (33)	22	11 Ser 2 Par	50%	L / R	12	14.4	9.7	15.0	Yes	-	\$84.70
1222-1218	1222-1218-STK	27.50 (69.9)	12 (30)	18 (46)	22	11 Ser 2 Par	100%	L / R	12	10.2	6.9	15.0	Yes	\$57.95	\$84.95
1224-0812-L		30.00 (76.2)	08 (20)	12 (30)	24	12 Ser 2 Par	50%	L	12	14.4	9.7	15.0	Yes	-	\$85.20
1224-1117-L	1224-1117-L-STK	30.00 (76.2)	11 (28)	17 (43)	24	12 Ser 2 Par	100%	L	12	10.2	6.9	15.0	Yes	\$58.45	\$85.45
1224-1218-L		30.00 (76.2)	12 (30)	18 (46)	24	8 Ser 3 Par	50%	L	12	21.6	14.6	20.0	Yes	-	\$85.70
1224-1725-L	1224-1725-L-STK	30.00 (76.2)	17 (43)	25 (64)	24	8 Ser 3 Par	100%	L	12	15.3	10.3	20.0	Yes	\$58.95	\$85.95
1224-2333-L	1224-2333-L-STK	30.00 (76.2)	23 (58)	33 (84)	24	6 Ser 4 Par	100%	L	12	20.4	13.8	25.0	Yes	\$59.20	\$86.20
1224-4150-L	1224-4150-L-STK	30.00 (76.2)	41 (104)	50 (127)	24	4 Ser 6 Par	100%	L	12	25.0	20.6	25.0	Yes	\$59.45	\$86.45
1225-2840	1225-2840-STK	31.25 (79.4)	28 (71)	40 (102)	25	5 Ser 5 Par	100%	L / R	12	25.0	17.2	25.0	Yes	\$59.70	\$86.70
1228-4850-L	1228-4850-L-STK	35.00 (88.9)	48 (122)	50 (127)	28	4 Ser 7 Par	100%	L	12	25.0	24.1	25.0	Yes	\$59.95	\$86.95

- 1. Stick Kit Defrosters.** Include only the defroster. No wire harness, installation kit or controls are included.
- 2. Connection Tabs.** "L" indicates all tabs on left while "L/R" indicates tabs on the left and right. Defrosters can be rotated for optimum tab alignment. See part drawing.
- 3. Amperage.** Shorter defrosters pull more amperage than longer defrosters.
- 4. Two Element Defrosters.** These defrosters require longer tabs so overall height is larger than standard.

© 2011 Planned Products LLC, All rights reserved.
 Frost Fighter and ThermaSync are registered Trademarks of Planned Products LLC.

ThermaSync[®] Defroster Controls and Accessories

Part No.	Description	Type/Voltage	Price ea.	Image
2712	Defroster Control and Switch – 12 Volt ThermaSync RELAY controls provide an attractive defroster switch and relay with standard ten minute automatic shut off timing. Includes the ThermaSync control, switch and full instructors.	RELAY 12 Volts	\$33.95	
2812	Defroster Control and Switch – 12 Volt ThermaSync MOSFET controls provide power modulation, selectable automatic shutoff timing and full SwitchBoss network compatibility. The control can configured to shut off from 10 to 160 minutes or activated manually. Includes the ThermaSync control, switch and instructors.	MOSFET 12 Volts	\$39.95	
2724	Defroster Control and Switch – 24 Volt ThermaSync RELAY controls provide an attractive defroster switch and relay with standard ten minute automatic shut off timing. Includes the ThermaSync control, switch and full instructors. <i>*24 Volt RELAY available with longer lead times.</i>	RELAY* 24 Volts	\$43.95	
2824	Defroster Control and Switch – 24 Volt ThermaSync MOSFET controls provide power modulation, selectable automatic shutoff timing and full Switch Boss network compatibility. The control can configured to shut off from 10 to 160 minutes. Includes the ThermaSync control, switch and instructors.	MOSFET 24 Volts	\$49.95	
2728	Wire Harness Installation Pack The ThermaSync installation pack makes it easy to install ThermaSync Defroster Controls. Includes a wire harness with color coded connectors, fuse, fuse holder, switch mounting plate, power tap, spare connectors, wire ties and full instructions. Does not include control or switch.	12/24 Volts	\$28.95	
2730	Switch Boss Defroster Control This control enables several Clear View II defrosters to be activated from a single master switch. Each defroster's ThermaSync control is plugged into the SwitchBoss. Up to four defrosters per SwitchBoss can be used. The networked defrosters can be different sizes. Automatic timing is set by the Master.	12/24 Volts	\$36.95	
2745	Tab Adaptor Wire Harness Connectors and wire to adapt existing defroster connectors to work with the Clear View II defroster tab locations. Includes ground wire and power wire to extend a vehicle's existing connector wires to work with any defrosters tab location. Plugs into defroster connector and Clear View defroster tabs.	12/24 Volts	\$8.95	



Planned Products LLC
4699 Nautilus Court S.
Suite 201
Boulder, CO 80301

Tel: 303.682.0274
Fax: 303.682.0678
info1@frostfighter.com
www.frostfighter.com

